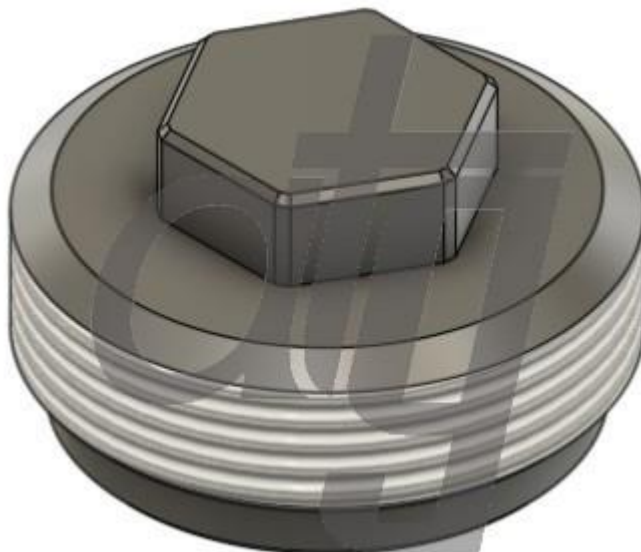




Adjustment screw Part No. 24520172



Application
d1 - 29.17 D - 33 H - 18.7 M33x1.5 SKODA FABIA 1999-2008, VW LUPO 1999-2006, VW POLO 1995-2002, SEAT AROSA 1997-2004, VW JETTA 1984-1992, SEAT CORDOBA III 1999-2003, SEAT IBIZA 2001-2008, AUDI A2 2000-2005, AUDI A1 2010-, VW POLO V 2009-

FITS THE FOLLOWING

Rack part number	Crossreferences	Application
ATGR22141RB	VAG 601423055E, 6N1422061C, 6N1422061A, 6N1422061X, 6N1422051B, 6N1422061E, 6N1422061BX, 8Z1423055050, 6N1422061, 6N1422061H, 6N1422051, 6N1422061CX, 6N1422061B, 6N1422062CX, 6N1422055, 6N1422061EX	Volkswagen Jetta Lupo Polo IV (2001-2009) SEAT Arosa (6H) (1997-2004) Skoda Fabia I (1999-2007)
ATGR23991RB	VAG 6E1423061, 6Q1423061B, 6Q1423055E, 6Q1423061MX, 6Q1423051M, 6Q1423061E, 6Q1423055P, 6Q1423055D, 6Q1423061M, 6Q1423051K,	SEAT Cordoba I Рестайлинг (1999-2003) Ibiza III (2001-2008) Skoda Fabia I (1999-2007)



	6Q1423061D, 6Q1423055G, 6Q1423055B, 6Q1423061G	Volkswagen Polo III (1994-2002) Polo IV (2001-2009)
ATGR24731RB	VAG 8Z1423061E, 8Z1423055F, 8Z1423052X, 8Z1423055L, 8Z1423055E, 8Z1423052, 8Z1423061L, 8Z1423055J, 8Z1423055B	Audi A2 2000-2005
ATGR24741RB	VAG 6R1423055F, 6R1423055P, 6R1423055MX, 6R1423055FX, 6R1423055PX, 6R1423055M	Audi A1 I (2010-2015) Volkswagen Polo V (2009-2015)

More new products at <https://www.atg-components.com/warehouse-news>